

Economic Impact of Childcare

San Miguel County



About the Children of San Miguel County

Number of children in formal childcare:	~300
Number of children waiting to receive care:	>350
Number of births in 2000:	67
Number of births in 2006:	105
Average amount paid per child per year for childcare:	\$6,600

Births in San Miguel County



The Childcare Industry in San Miguel County



Number of licensed/regulated centers:	13
Number of year round providers:	10
Total capacity, excluding drop-in providers:	293 children at one time
Number of providers offering infant care:	5
Number of year-round infant spots:	12
Regional average salary of childcare workers:	\$23,000

Economic Impacts of Childcare






By enabling parents to work, the childcare industry generates \$2.4 million for the county economy. This represents the after-tax income gained by

workers who would otherwise leave the workforce or reduce their hours if they did not have childcare available.

In addition, the economy gains \$2.7 million through the operations of childcare centers.

Total economic impact: \$5 million

If childcare were not available in the county:

- In 42 percent of households, at least one household member would exit the workforce; 
- 30 percent of worker households with children would move out of the county; 
- The average household would lose \$26,000 per year in earnings; and 
- Altogether, these households would lose \$3.9 million in wages.

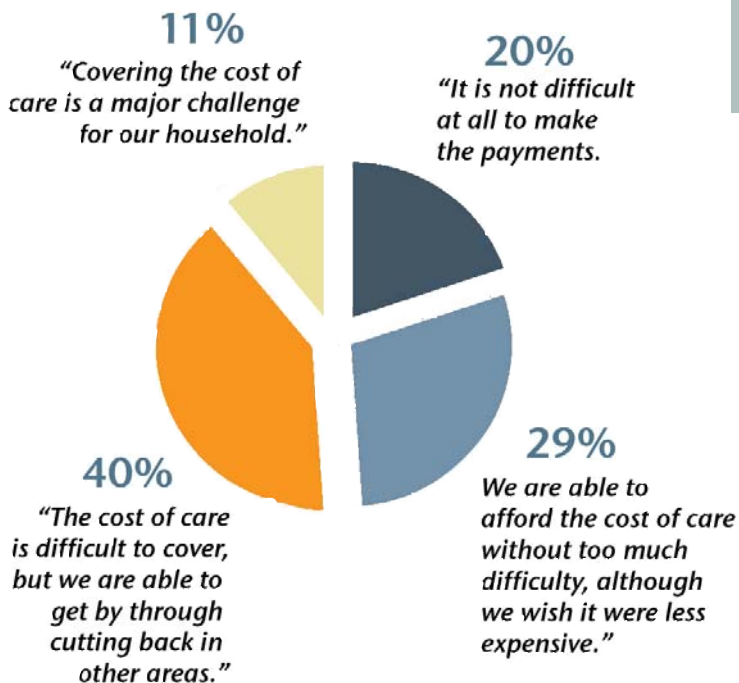
Comments from Parent Survey:

“Finding care for children who are younger than 2^{1/2} years old is tough!”



“Our town fears a serious childcare shortage.”

Difficulty Affording Cost of Care



Source: BBC Research & Consulting, Parent Survey, 2008.

Social Impacts of Childcare

The largest amount of brain development takes place between 0 to 3 years. Academic studies have shown that formal childcare benefits children by:

- Giving them a jump start on their formal education, leading to a more educated labor force and reduced reliance on public government programs;
- Increasing social responsibility of children; and
- Providing early intervention of services to children with special needs.

